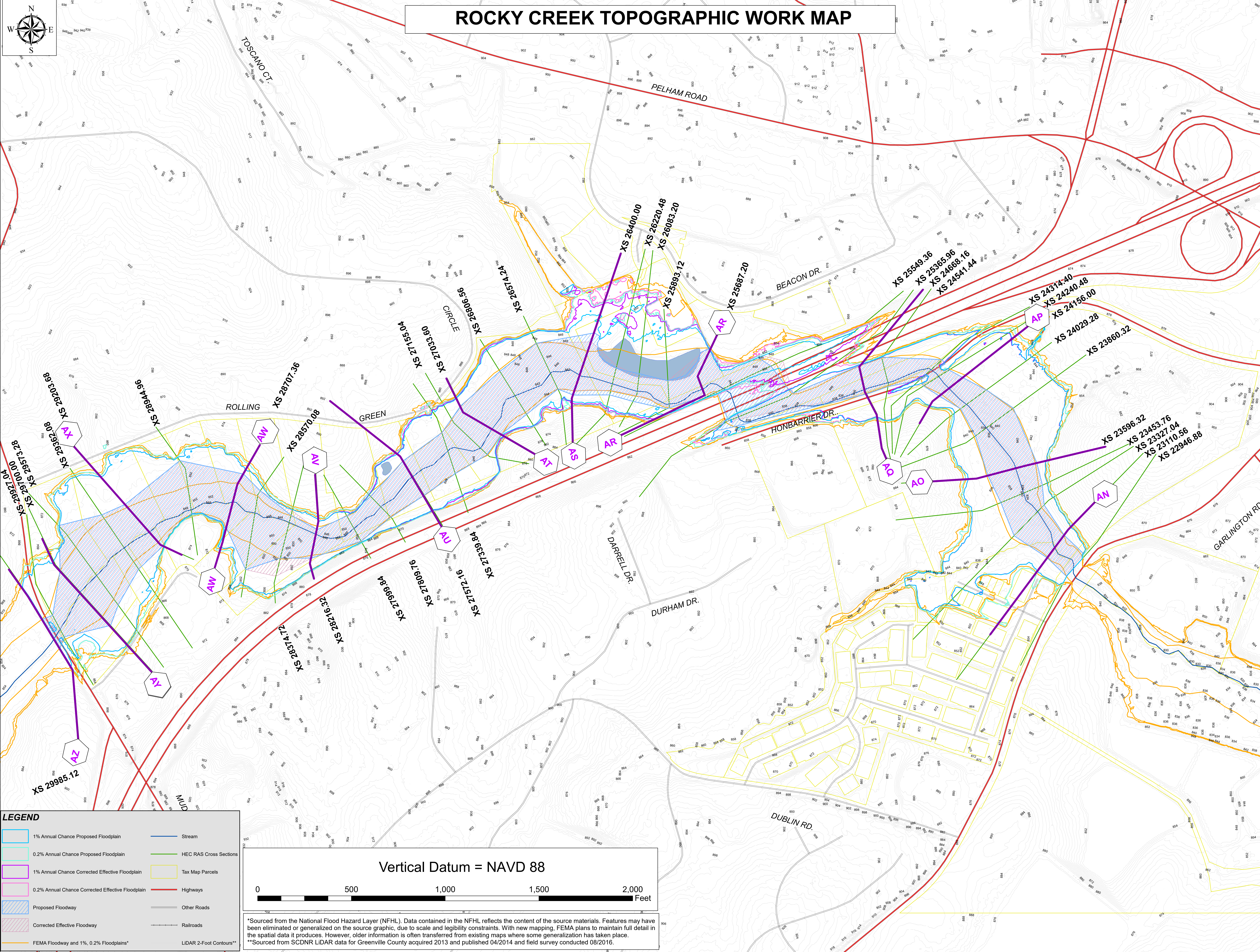
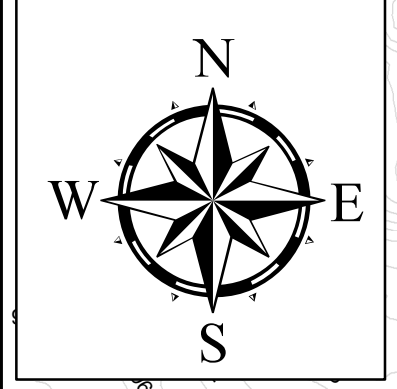
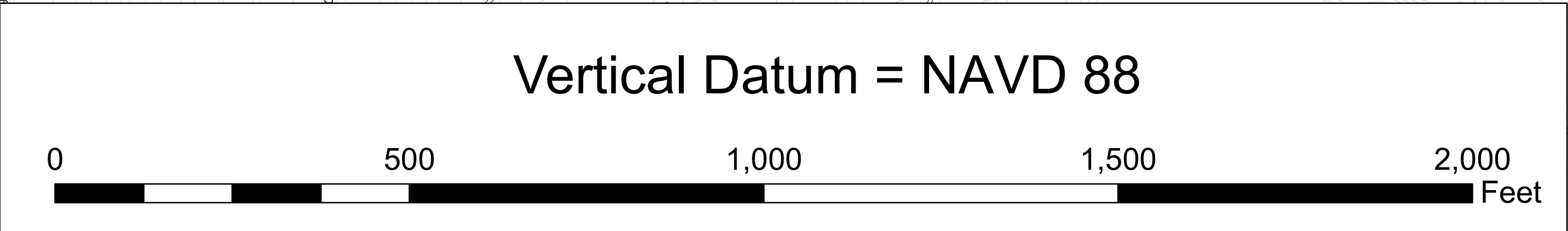


ROCKY CREEK TOPOGRAPHIC WORK MAP



LEGEND

	1% Annual Chance Proposed Floodplain		Stream
	0.2% Annual Chance Proposed Floodplain		HEC RAS Cross Sections
	1% Annual Chance Corrected Effective Floodplain		Tax Map Parcels
	0.2% Annual Chance Corrected Effective Floodplain		Highways
	Proposed Floodway		Other Roads
	Corrected Effective Floodway		Railroads
	FEMA Floodway and 1%, 0.2% Floodplains*		LIDAR 2-Foot Contours**



*Sourced from the National Flood Hazard Layer (NFHL). Data contained in the NFHL reflects the content of the source materials. Features may have been eliminated or generalized on the source graphic, due to scale and legibility constraints. With new mapping, FEMA plans to maintain full detail in the spatial data it produces. However, older information is often transferred from existing maps where some generalization has taken place.
 **Sourced from SCDNR LIDAR data for Greenville County acquired 2013 and published 04/2014 and field survey conducted 08/2016.